

Announcements:

- Denton runway (13R/31L) construction is scheduled from late 2020 through early 2022 for development. The Denton closure begins in early 2021 and will last approx. 9 months.

**Dallas
Love Field
Community
Weekly
Update**

*May Twenty-Ninth
Twenty Twenty*

LFEAC

The next LFEAC meeting is currently scheduled for Thursday, July 16, 2020, at 6 p.m. The location of this meeting is subject to change as social distancing policies are updated.

The Love Field Environmental Advisory Committee will be held at the Administration Building located at 7555 Lemmon Ave. Please join us to discuss any environmental issues in the community including noise.








You may submit your noise concern through our Noise Lab website.

<https://dal.noiselab.casper.aero/>



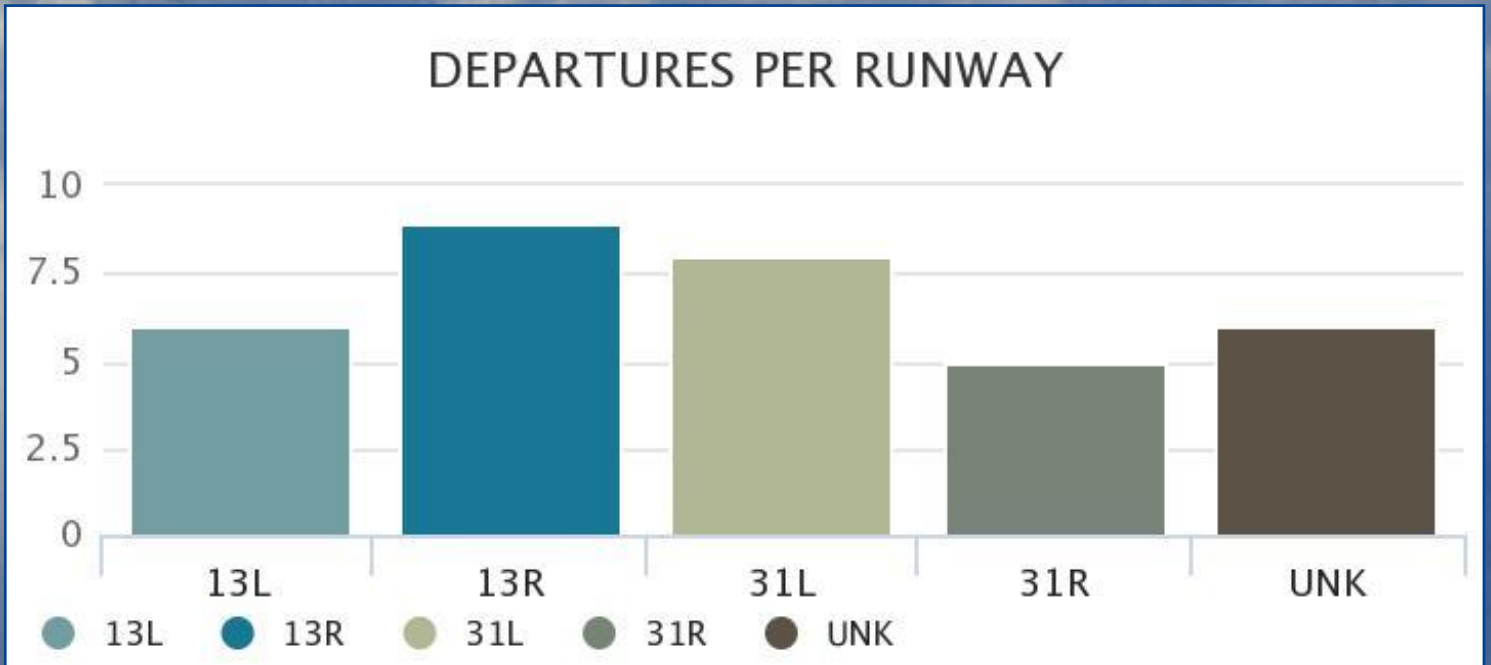
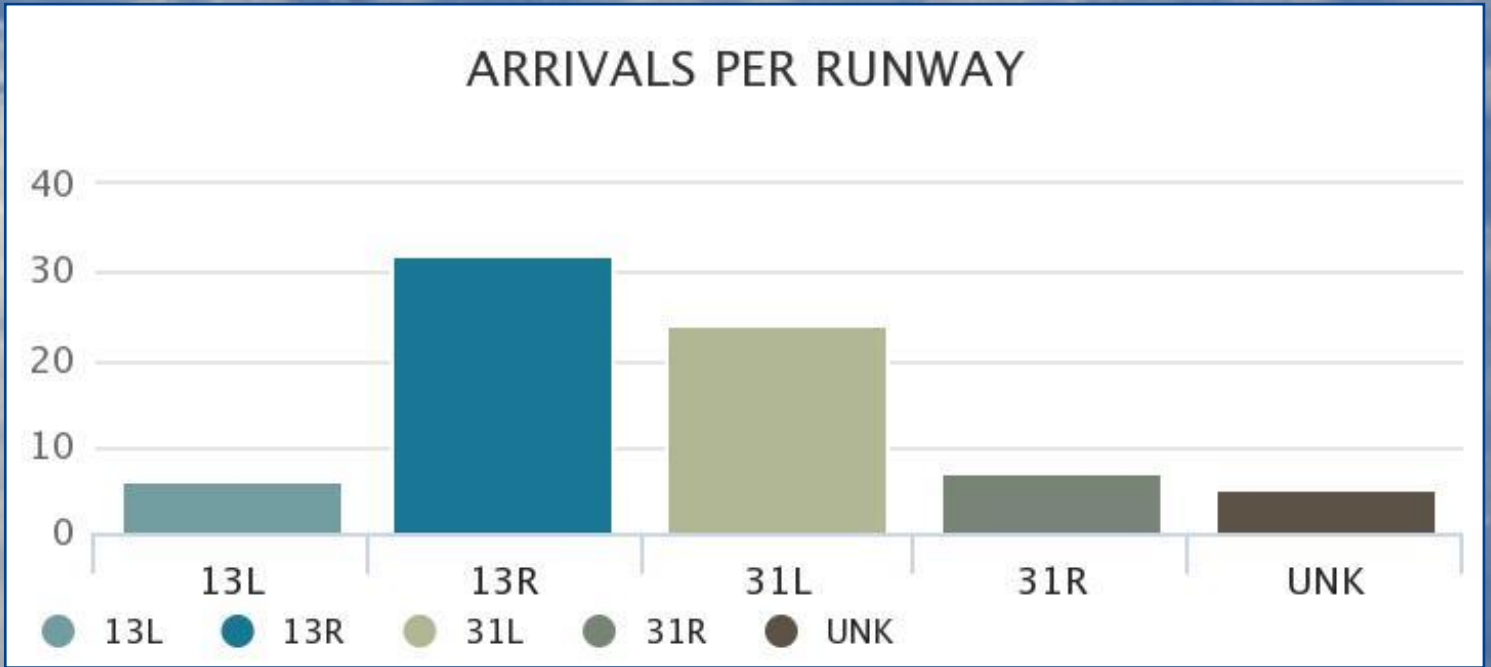
"Adventure is worthwhile."

Weather Forecast

Fri May 29	Sat May 30	Sun May 31	Mon Jun 1	Tue Jun 2	Wed Jun 3	Thu Jun 4
						
86° F	87° F	87° F	89° F	92° F	92° F	92° F
65° F	64° F	66° F	70° F	72° F	73° F	78° F
NNW 11 MPH	NE 8 MPH	ESE 6 MPH	ESE 6 MPH	SSE 8 MPH	S 10 MPH	S 11 MPH

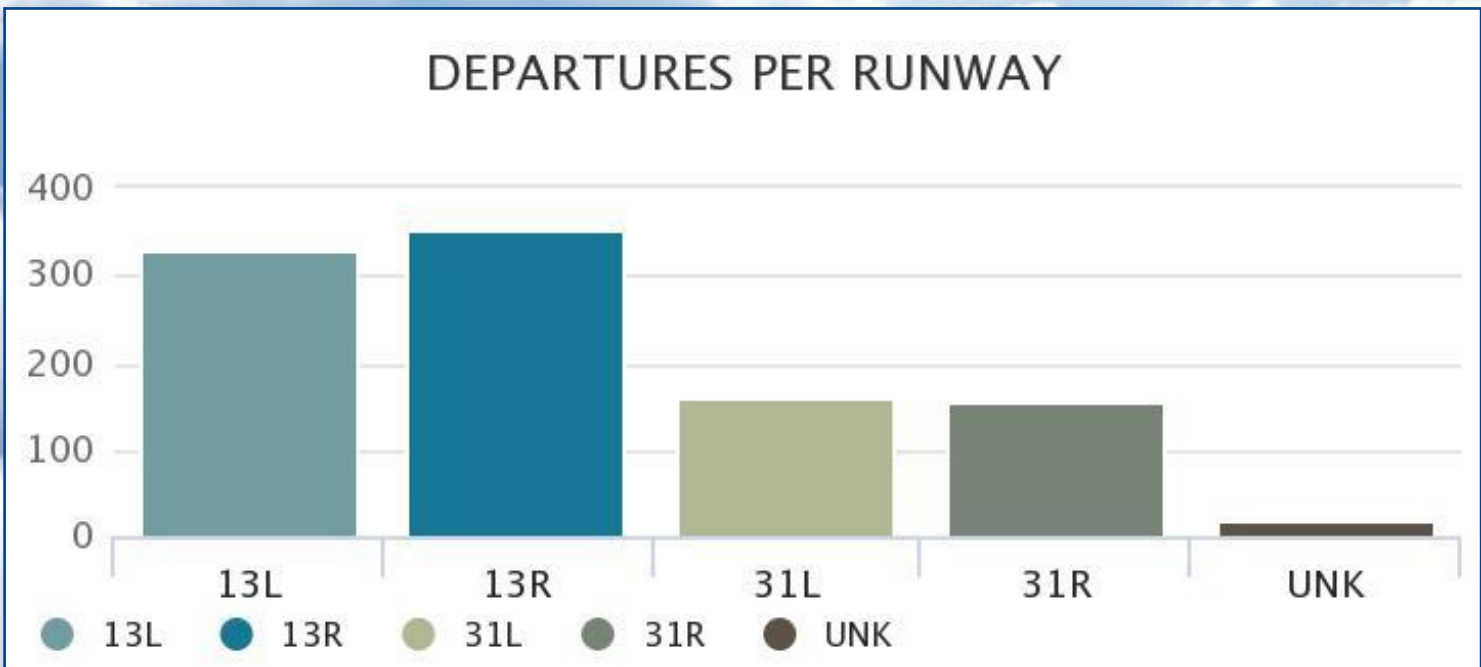
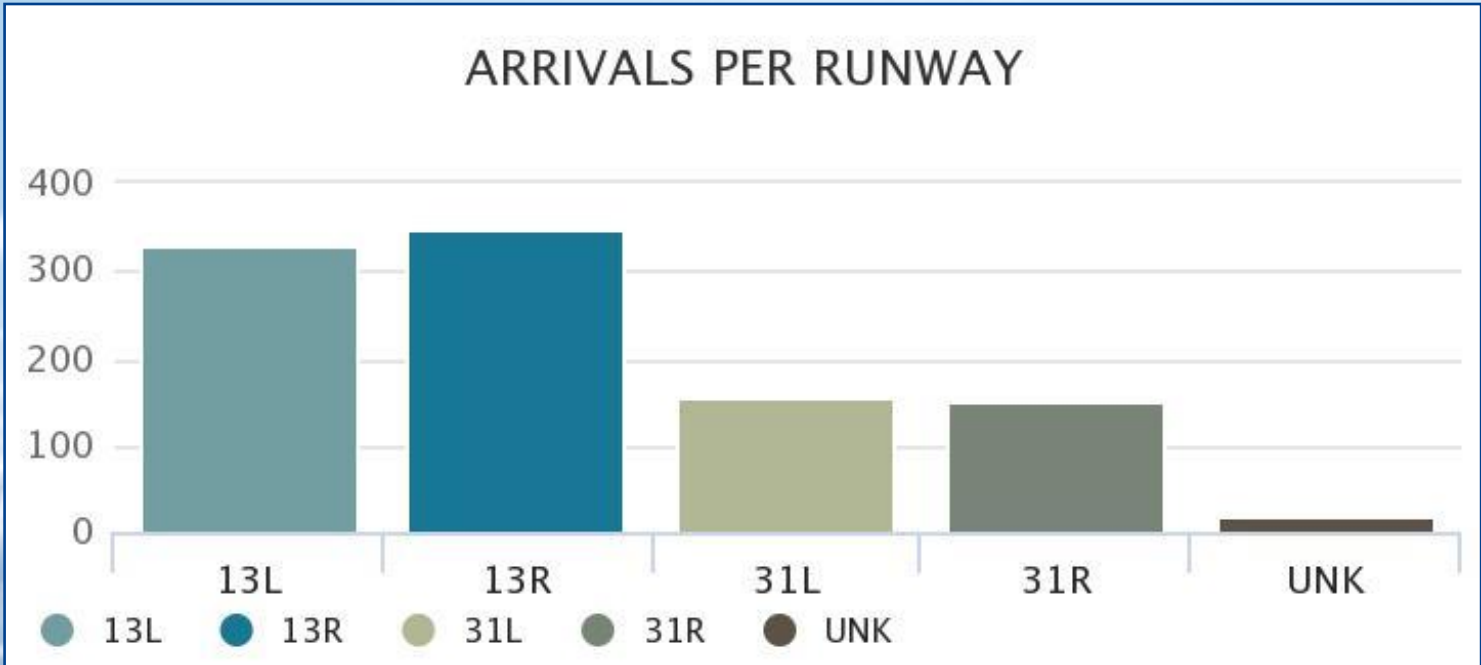
Arrivals and Departures Per Runway During Preferential Hours

For the Week of May 14th - May 20th



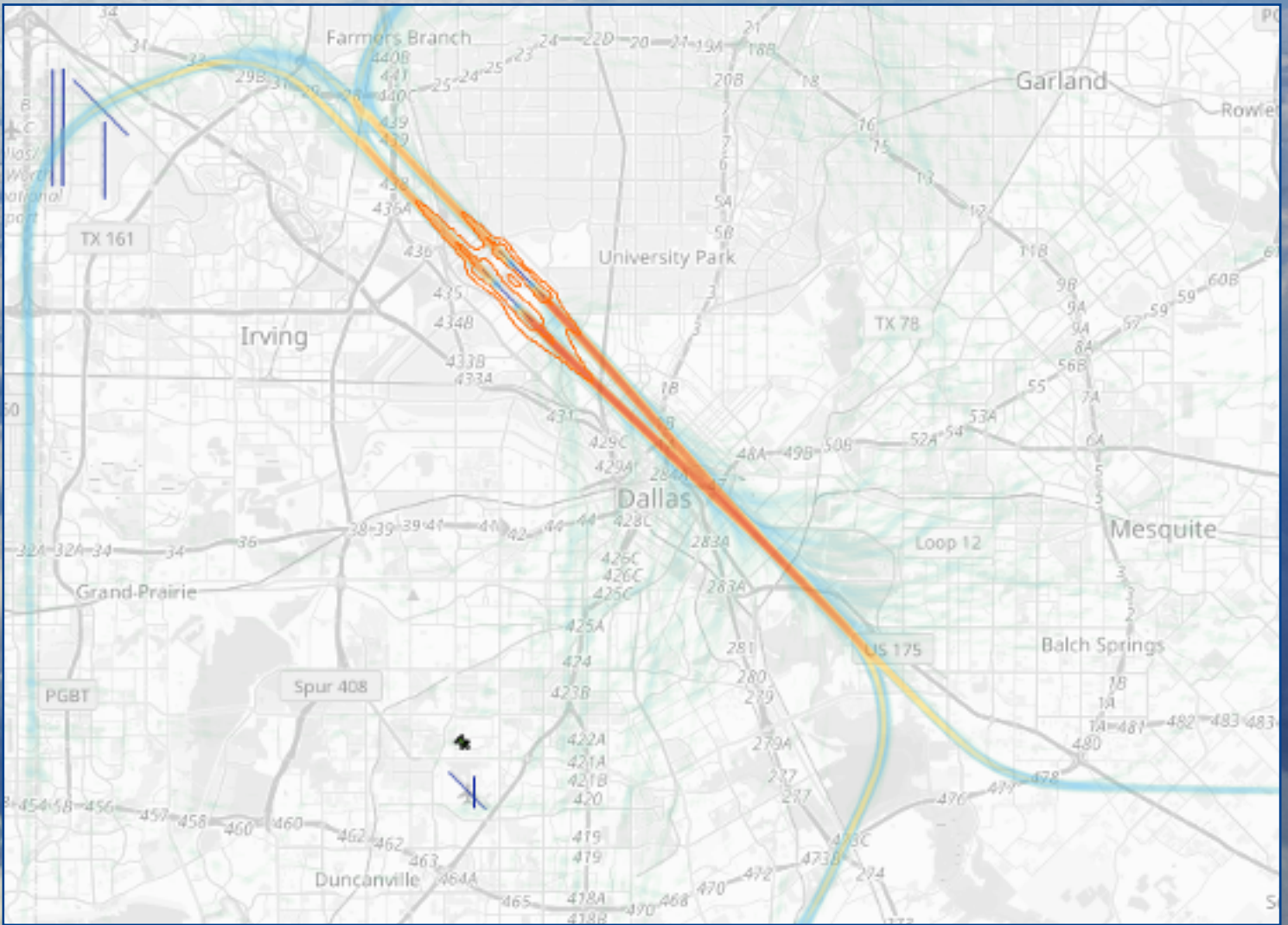
Arrivals and Departures

For the Week of May 14th - May 20th



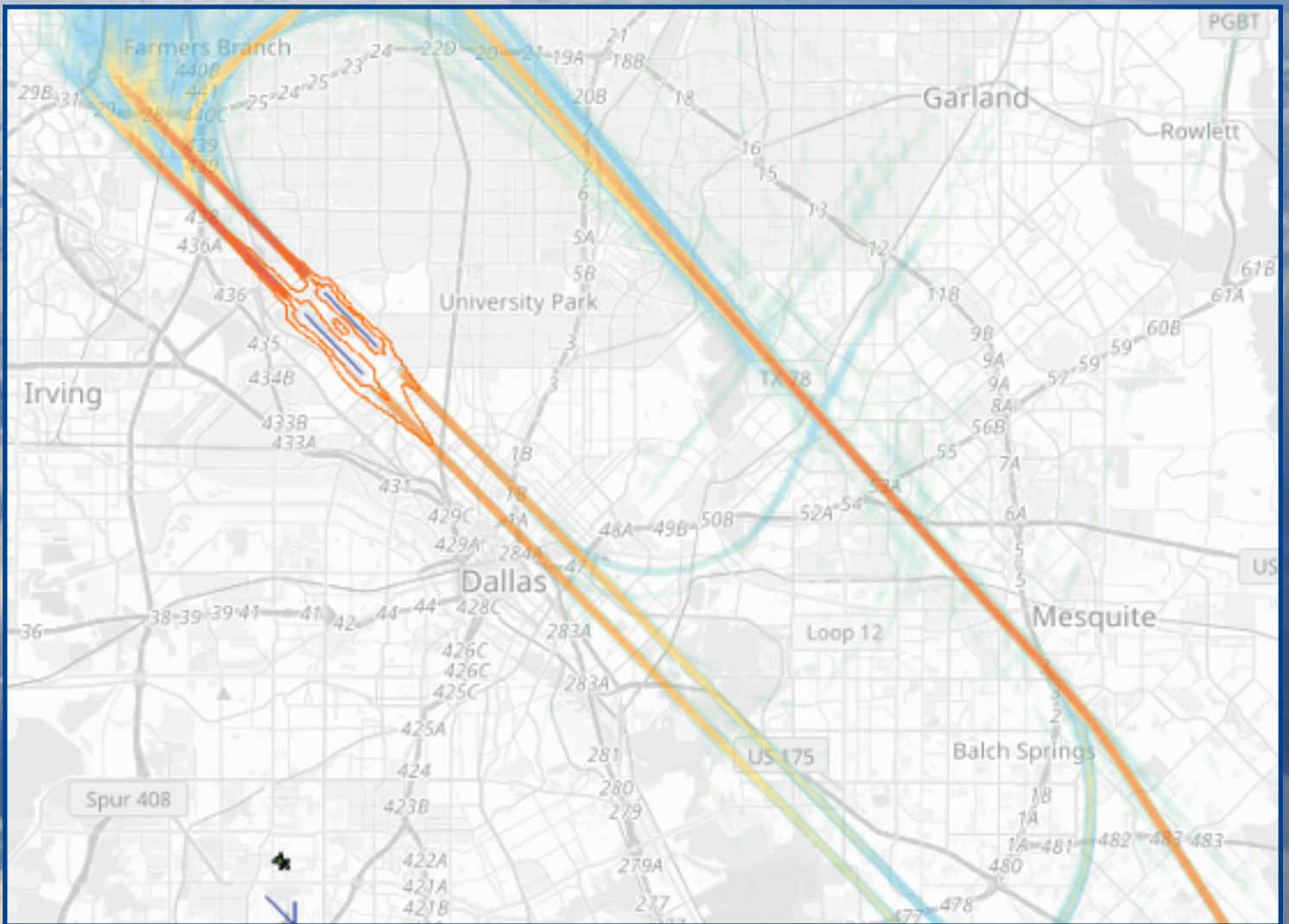
Departures

For the Week of May 14th - May 20th



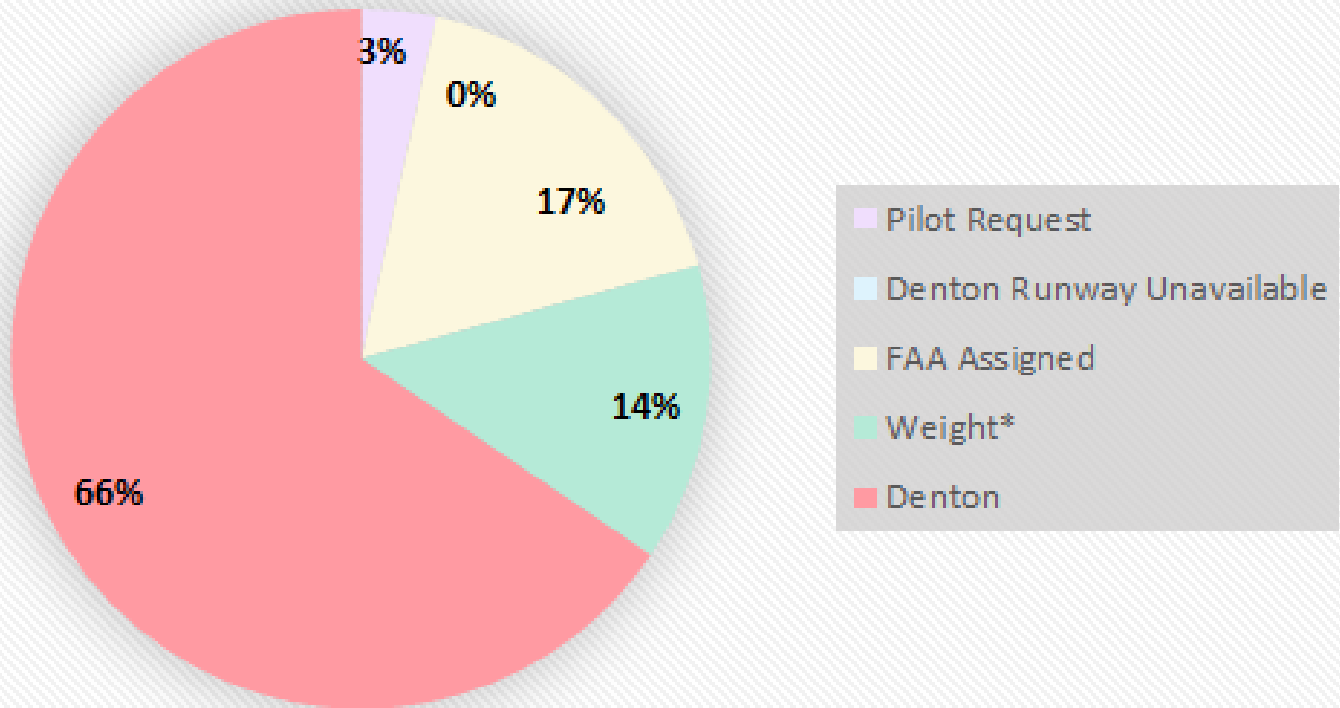
Arrivals

For the Week of May 14th - May 20th



Weekly Preferential Runway Deviations

Overall: May 21st - May 27th



Deviation Report - OVERALL		
	Category	Total Flights
Lemmon	Pilot Request	1
	Denton Runway Unavailable	0
	FAA Assigned	5
	Weight*	4
	Denton	19

***Nighttime Preferential Runway (Denton RWY 13R/31L) for all jet aircraft and any aircraft weighing over 12,500 pounds, between the hours of 9:00 p.m. and 6:00 a.m.**

RUNWAY & TAXIWAY CLOSURES:

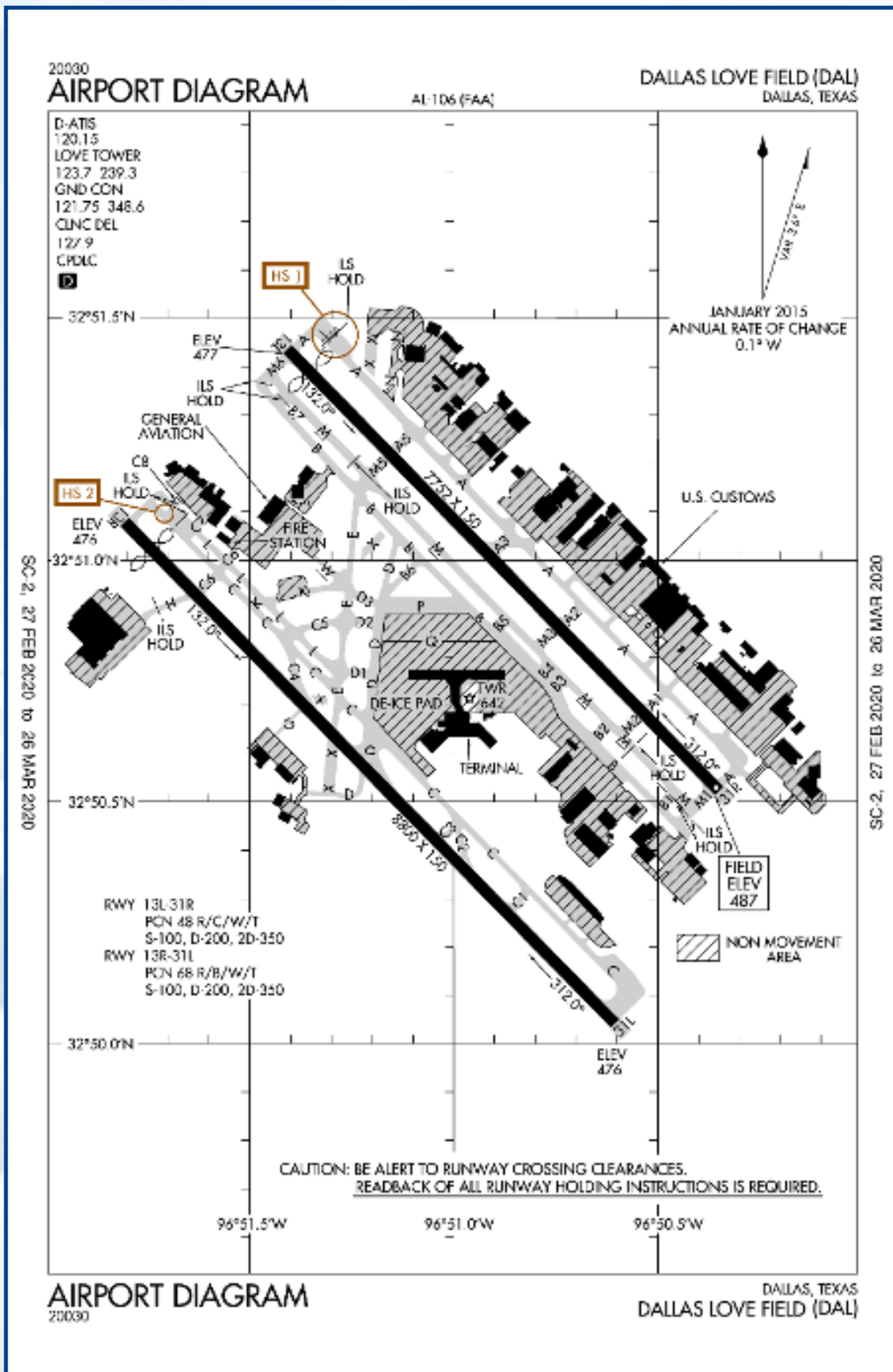
NEXT 7 DAYS

- **Thu/May 28th 0800-1700:** Taxiway B closed between B4 and Ron B, Taxiway B3 closed, RON B closed. ABR paint work.
- **Fri/May 29th 0800-1700:** Taxiway B closed between B4 and Ron B, Taxiway B3 closed, RON B closed. ABR paint work.
- **Sat/May 30th 0800 - Sun/May 31st 1900:** Runway 13L/31R closed for ABR.
- **Sat/May 30th 0800-1200:** Taxiway M5 closed between 13L and M, Taxiway A5 closed.
- **Sat/May 30th 0800-1900:** Taxiway A closed between 13L Approach and taxiway N, Taxiway B closed between Tiger Ramp and M6, Taxiway M closed between B1 and B3, Taxiways A1,A3,M2 and M6 closed.
- **Sun/May 31st 0800-1900:** Taxiway A closed between 13L Approach and taxiway N, Taxiway B closed between Tiger Ramp and M6, Taxiway M closed between B1 and B3, Taxiways A1,A3,M2 and M6 closed.
- **Sun/May 31st 2330 - Mon/Jun 1st 0600:** Runway 13R/31L closed for AFM.
- **Mon/Jun 1st 1200 - Thu/Jun 14th 1900:** Taxiway B closed between M1 and Gulfstream South north entrance, Taxiway B1 closed, Gulfstream South south entrance closed.
- **Mon/Jun 1st 2300 - Tue/Jun 2nd 0100:** Taxiway L closed between C6 and C8.
- **Tue/Jun 2nd 0100-0530:** Taxiway L closed between C5 and E. Hi-Lite painting operations.
- **Tue/Jun 2nd 2300 - Wed/Jun 3rd 0100:** Taxiway C closed between C6 and E, Taxiway C4 closed. Hi-Lite painting operations.
- **Wed/Jun 3rd 0100 - 0530:** Taxiway C between D and C1 closed. Taxiway C2 and C3 closed.
- **Wed/Jun 3rd 2330 - Thu/Jun 4th 0600:** ABR to join AFM closure of 13L/31R.
- **Wed/Jun 3rd 2330 - Thu/Jun 4th 0600:** Runway 13L/31R closed for AFM.

ONGOING CLOSURES

- TWY B BTN B1 and TWY M1 CLSD
- TWY M BTN TWY M5 AND TWY M6 CLSD
- TWY B7 CLSD
- TWY B BTN TWY D AND TERMINAL GATE 2 CLSD
- TWY B BTN GULFSTREAM SOUTH RAMP AND OVERNIGHT BRAVO RAMP CLSD
- TWY B BTN BOMBARDIER RAMP AND TWY B3 NONMOVEMENT AREA
- TWY B1 NONMOVEMENT AREA
- TWY B2 CLSD
- TWY B5 CLSD
- TWY B6 CLSD
- TWY P CLSD
- TWY C5 BTN TWY E AND TWY L CLSD

** Please see the airport diagram on the next page for locations of runways and taxiways.*



In an effort to serve you better, Dallas Love Field has opened the Airport Operation Center (AOC) for your use. The AOC is staffed 24 hours per day to direct your airport related concerns.

If you are submitting an aircraft noise complaint, please call the AOC at 214-670-LOVE (5683).

Translated copies of this newsletter are available upon request by emailing the Department of Aviation Environmental Division at AVIEnvironmental@dallascityhall.com

Las copias traducidas de este boletín están disponibles a solicitud enviando un correo electrónico a la División de Medio Ambiente de la Aviación al AVIEnvironmental@dallascityhall.com

For questions or concerns please contact:



Isaac Ellison
Aviation Noise Specialist
City of Dallas | DallasCityHall.com
Department of Aviation
7555 Lemmon Ave
Dallas, TX 75209
O: (214) 670-6843
AVINoise@dallascityhall.com



Dallas Love Field